

Erratum: Topological features of large fluctuations to the interior of a limit cycle [Phys. Rev. E 55, 2369 (1997)]

V. N. Smelyanskiy, M. I. Dykman, and R. S. Maier

[S1063-651X(97)07208-5]

PACS number(s): 05.40.+j, 02.50.-r, 05.20.-y, 02.40.-k, 99.10.+g

Figure 4 of the paper was, erroneously, a duplicate of Fig. 5. This is the correct Fig. 4, together with its caption (unchanged).

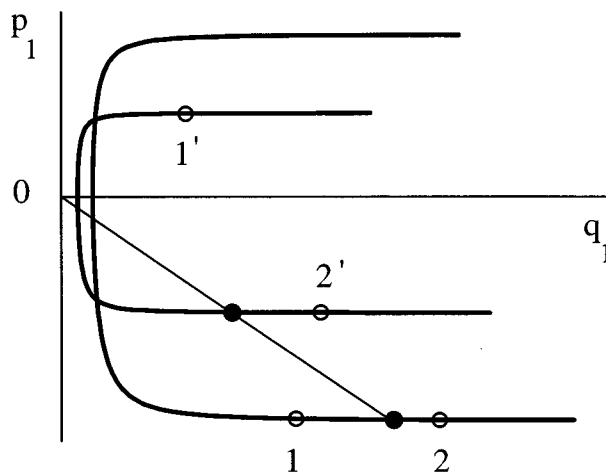


FIG. 4. Cross sections of two turns of the surface $p_1 = p_1(\mathbf{q})$ of Fig. 3(a). Here $q_2 = 0$. The turn II is the turn I after one revolution over the p_1 axis, i.e., with Θ of Eq. (66) increased by 2π . Parameters are the same as in Fig. 3. The successive intersections of the MPHP with the $q_2 = 0$ plane are shown with filled circles. Over the revolution, the extreme trajectory 1 passes through the fold (its projection is reflected by the caustic), and goes from the lower to the upper sheet of $p_1(\mathbf{q})$. Trajectory 2 always stays on the side opposite to the caustic with respect to the MPHP. The solid line that starts at the origin and passes through the filled circles is the cross section of the stable manifold of the fixed point to which MPHP belongs.